



The Aging Workforce

April 7, 2011

Desiree Phair

Regional Labor Economist, Seattle-King County

Employment Security, LMEA

Population by Age

Percentage of Population by Age



Comparison of Population by Age, 2010

	U.S. (2009)	State	King
0-4	6.9%	6.6%	6.1%
5-9	6.6%	6.5%	5.9%
10-14	6.7%	6.5%	5.3%
15-19	7.1%	6.9%	6.0%
20-24	7.0%	7.2%	7.8%
25-29	7.0%	7.3%	8.4%
30-34	6.5%	6.6%	7.0%
35-39	7.0%	6.6%	7.3%
40-44	7.3%	6.8%	7.5%
45-49	7.6%	7.4%	7.6%
50-54	7.0%	7.3%	7.4%
55-59	6.0%	6.7%	6.7%
60-64	4.8%	5.6%	5.6%
65-69	3.6%	3.9%	3.7%
70-74	2.9%	2.7%	2.4%
75-79	2.4%	2.0%	1.8%
80-84	1.9%	1.6%	1.5%
85 +	1.8%	1.8%	2.0%
0-19	27.3%	26.4%	23.3%
20-39	27.5%	27.7%	30.5%
40-59	27.9%	28.2%	29.2%
60+	17.4%	17.6%	17.0%

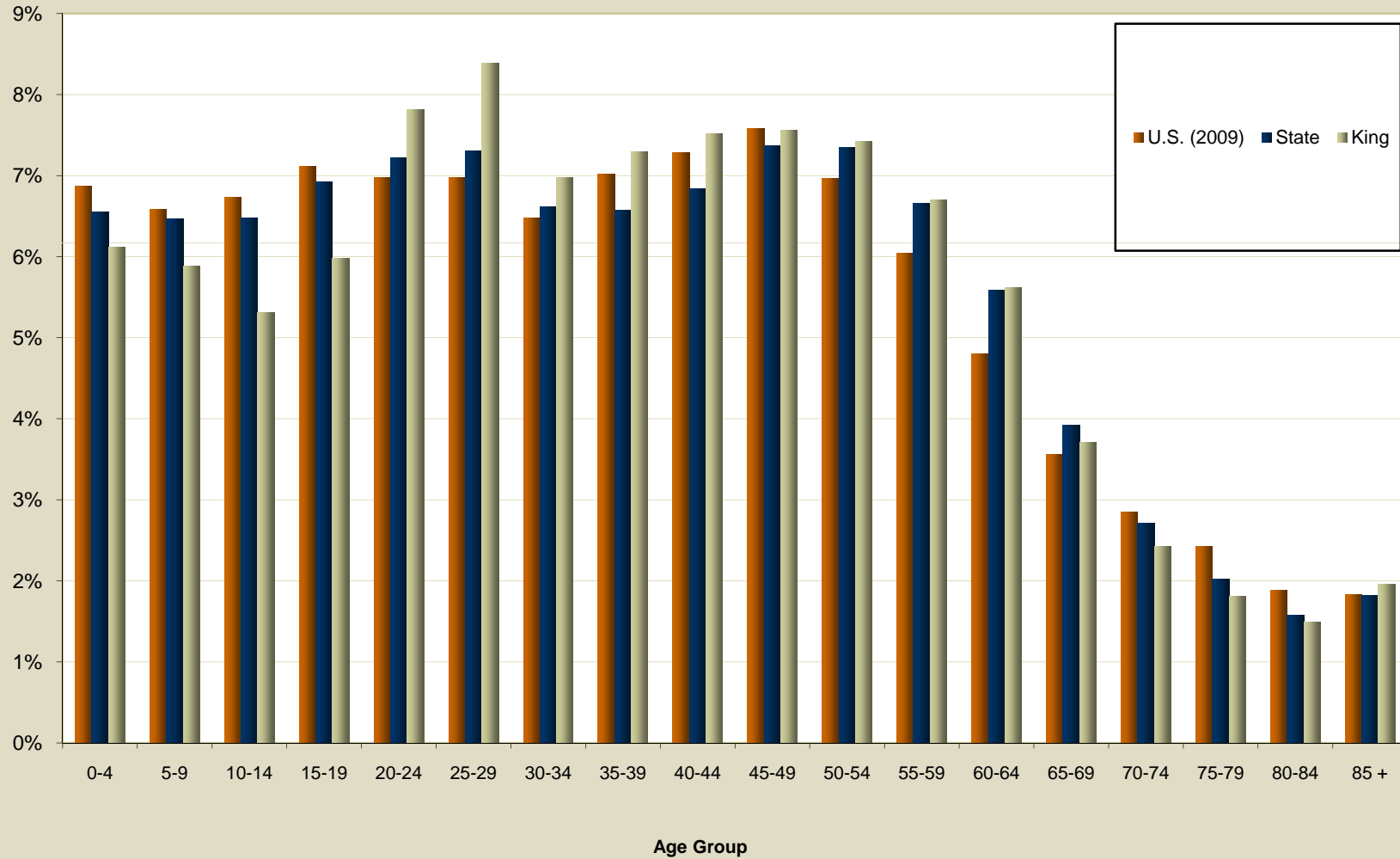
Data Source:

Washington Office of Financial
Management, U.S. Bureau of
Economic Analysis

Percentage of Population by Age



Percent of Population by Age Group, 2010



Data Source: Washington Office of Financial Management, U.S. Bureau of Economic Analysis

King County Projected Percentage of Population by Age



King County, Current and Projected Population

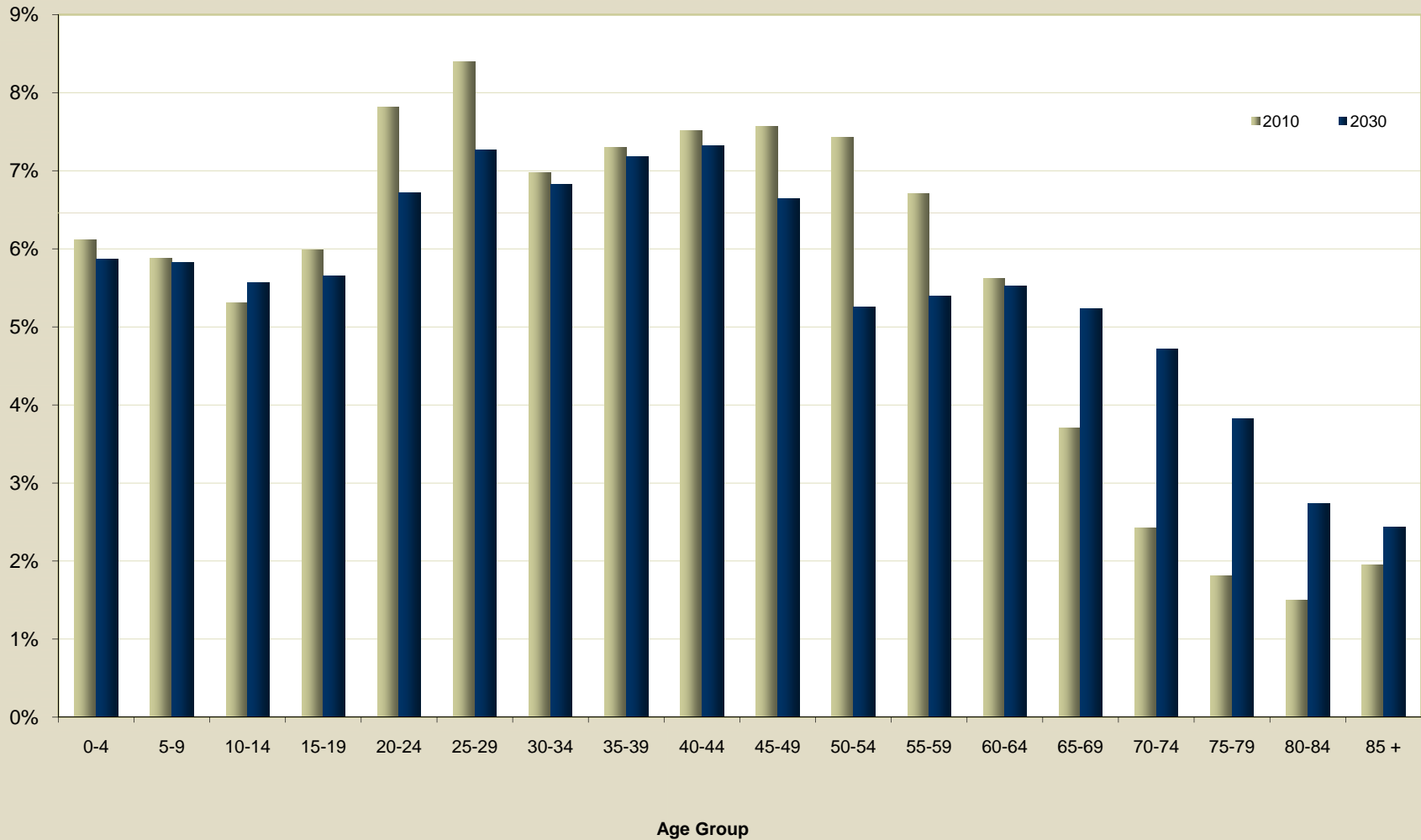
	2010	2030
0-4	6.1%	5.9%
5-9	5.9%	5.8%
10-14	5.3%	5.6%
15-19	6.0%	5.7%
20-24	7.8%	6.7%
25-29	8.4%	7.3%
30-34	7.0%	6.8%
35-39	7.3%	7.2%
40-44	7.5%	7.3%
45-49	7.6%	6.6%
50-54	7.4%	5.3%
55-59	6.7%	5.4%
60-64	5.6%	5.5%
65-69	3.7%	5.2%
70-74	2.4%	4.7%
75-79	1.8%	3.8%
80-84	1.5%	2.7%
85 +	2.0%	2.4%

Data Source:
 Washington Office of Financial
 Management, U.S. Bureau of
 Economic Analysis

King County Projected Percentage of Population by Age (2010 v 2030)



Percent of Population by Age Group, Current and Projected King County



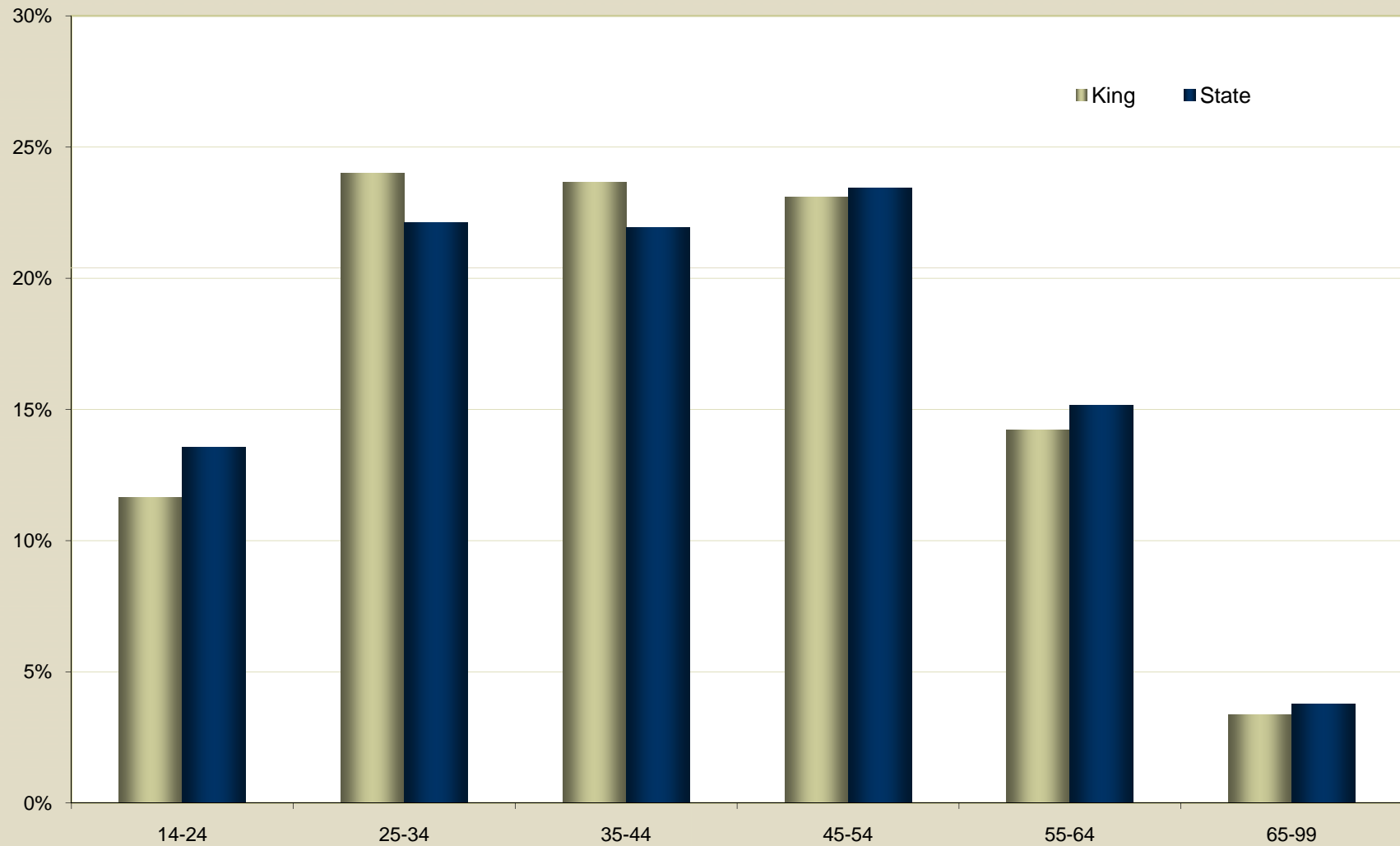
Data Source: Washington Office of Financial Management, U.S. Bureau of Economic Analysis

Workforce by Age

Workforce Age Distribution (King v State)

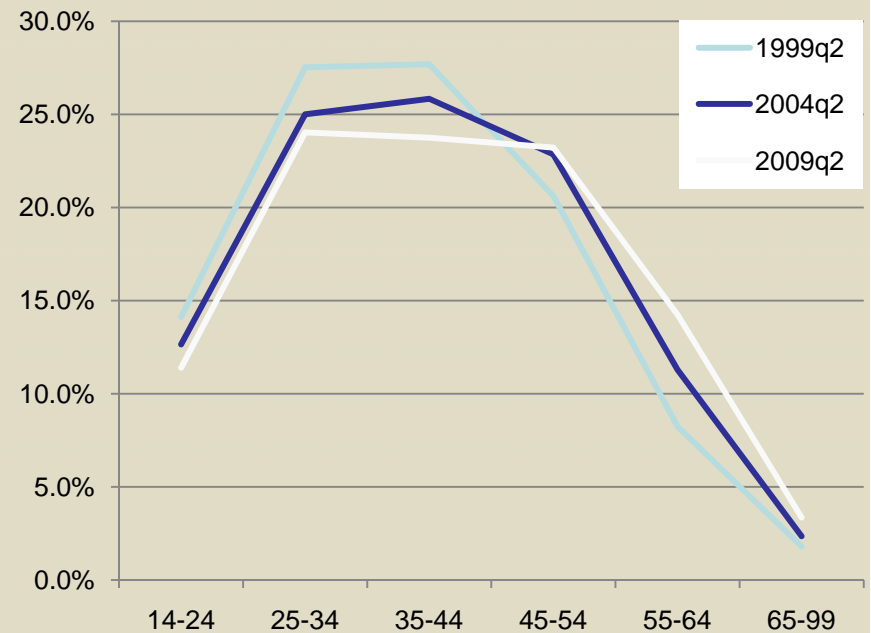
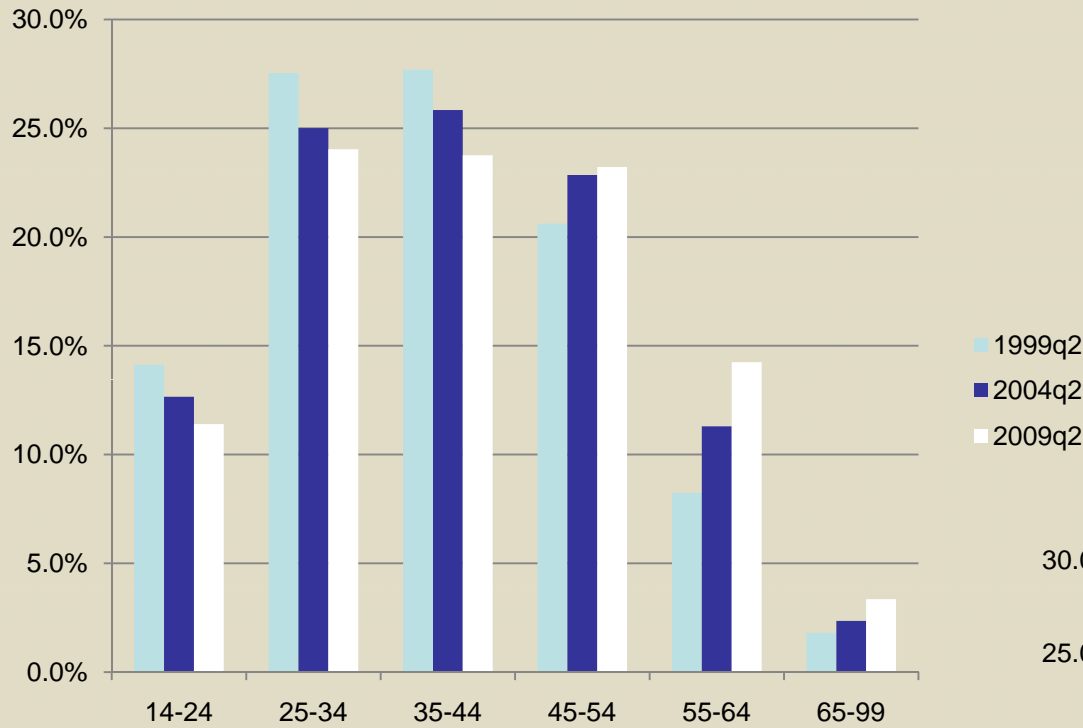


Percent of Jobs by Age of Jobholder, 2009



Data Source: WA Employment Security Department, US Census Bureau

Workforce Age Distribution Over Time (King County)



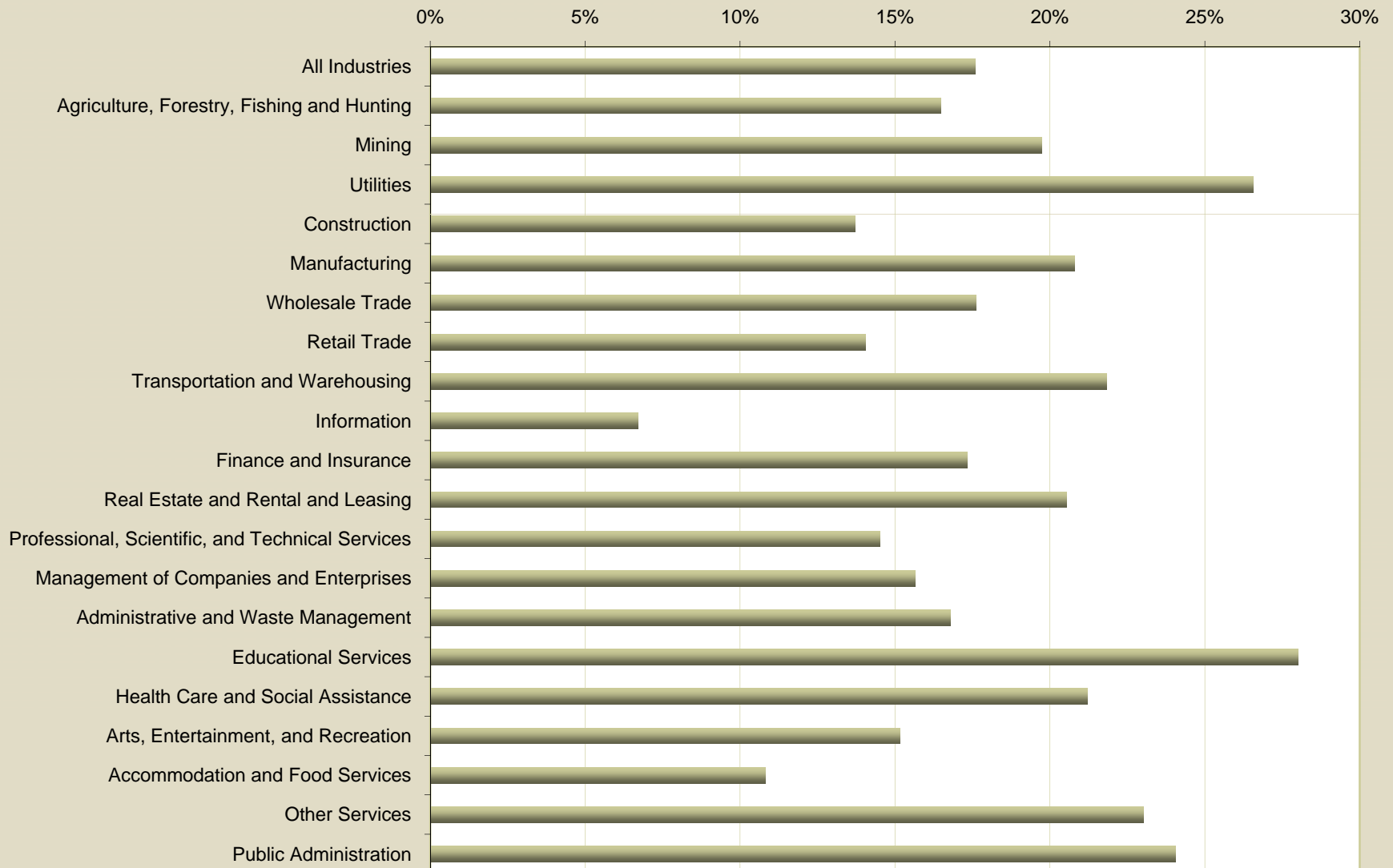
Source: WA Employment Security Department,
US Census Bureau

Workers 55+ by Industry (King County)



Percent of Jobs Held by Workers Age 55+
King County, 2009

Source: WA Employment Security Department, US Census Bureau





Desiree Phair
Regional Labor Economist, Seattle-King County

2003 Western Ave., Suite 250
Seattle, WA 98121

206-448-0474 x3073
dphair@esd.wa.gov